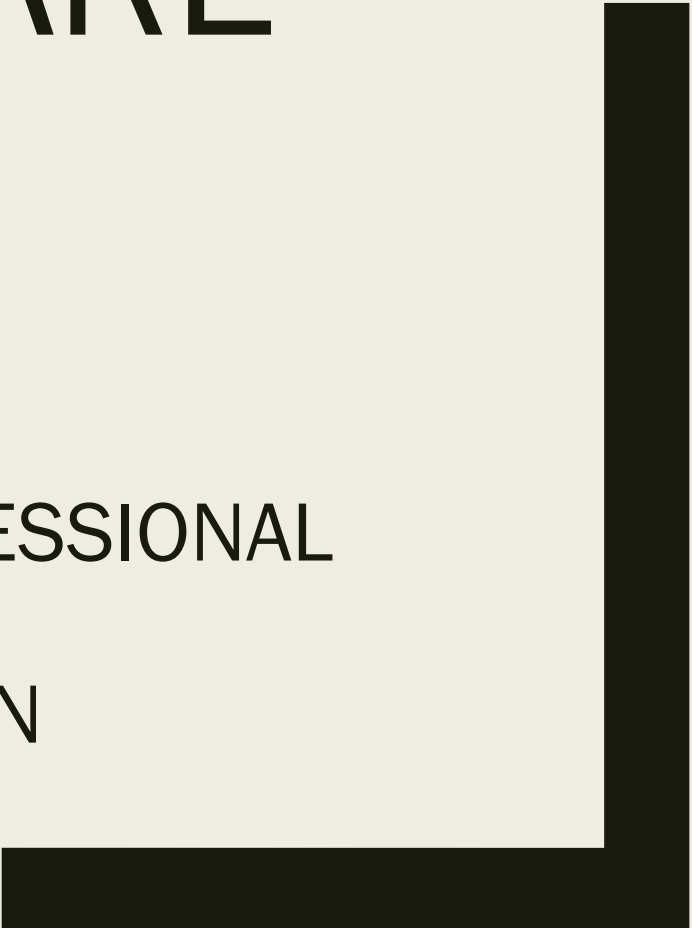




QUICK PAPER CARE REVIEW

BY: CLINICAL PRACTICE AND PROFESSIONAL
DEVELOPMENT (CPPD)
LINDSAY BRADLEY, RN, BSN
TIFFANY LOW, RN, BSN



Basic PAPR Review

- Go slowly and follow all directions when donning & doffing all PPE, including PAPR helmet
- Be gentle when cleaning the PAPR helmet, do NOT remove parts of helmet to clean
- PAPR supplies are limited due to worldwide demand, we must protect what we have
- If PAPR helmets on your unit are broken/nonfunctional, please notify your Charge RN/leadership team and contact Safety x67016 or Nursing Supervisor to report

What's missing from this PAPR?



Interior headband/liner removed for unknown reason

How to avoid:

Do NOT remove or lift any plastic parts from PAPR helmet during cleaning process.



What happened
to this battery?



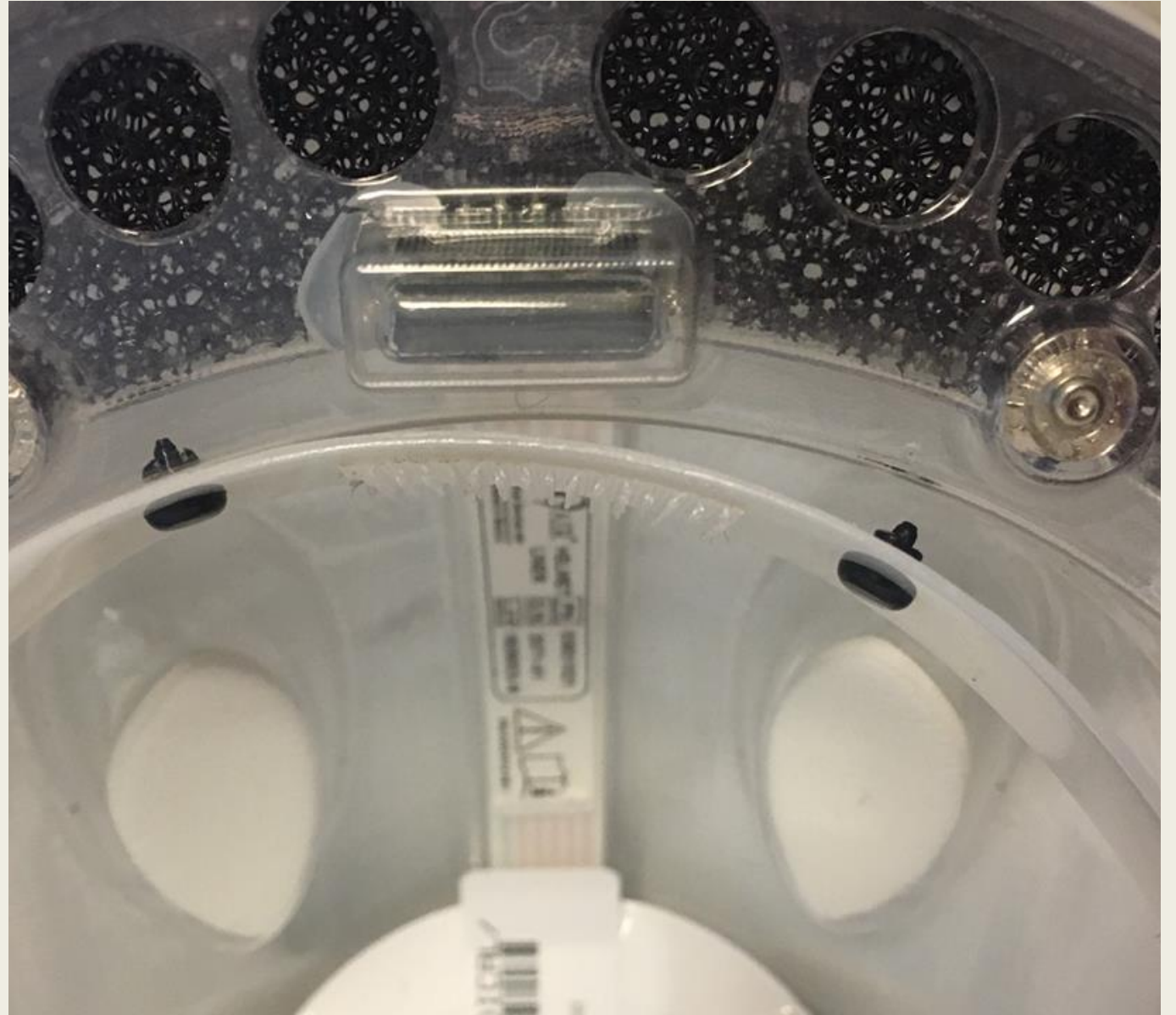
Battery locking mechanism broken

How to avoid:

Disconnect the power cord from the battery by pressing down FULLY on the black Secure Lock Button to release the cord connector and pull the cord connector out of the battery connector.



What's wrong with this picture?



Black screw pulled out of headband

How to avoid:

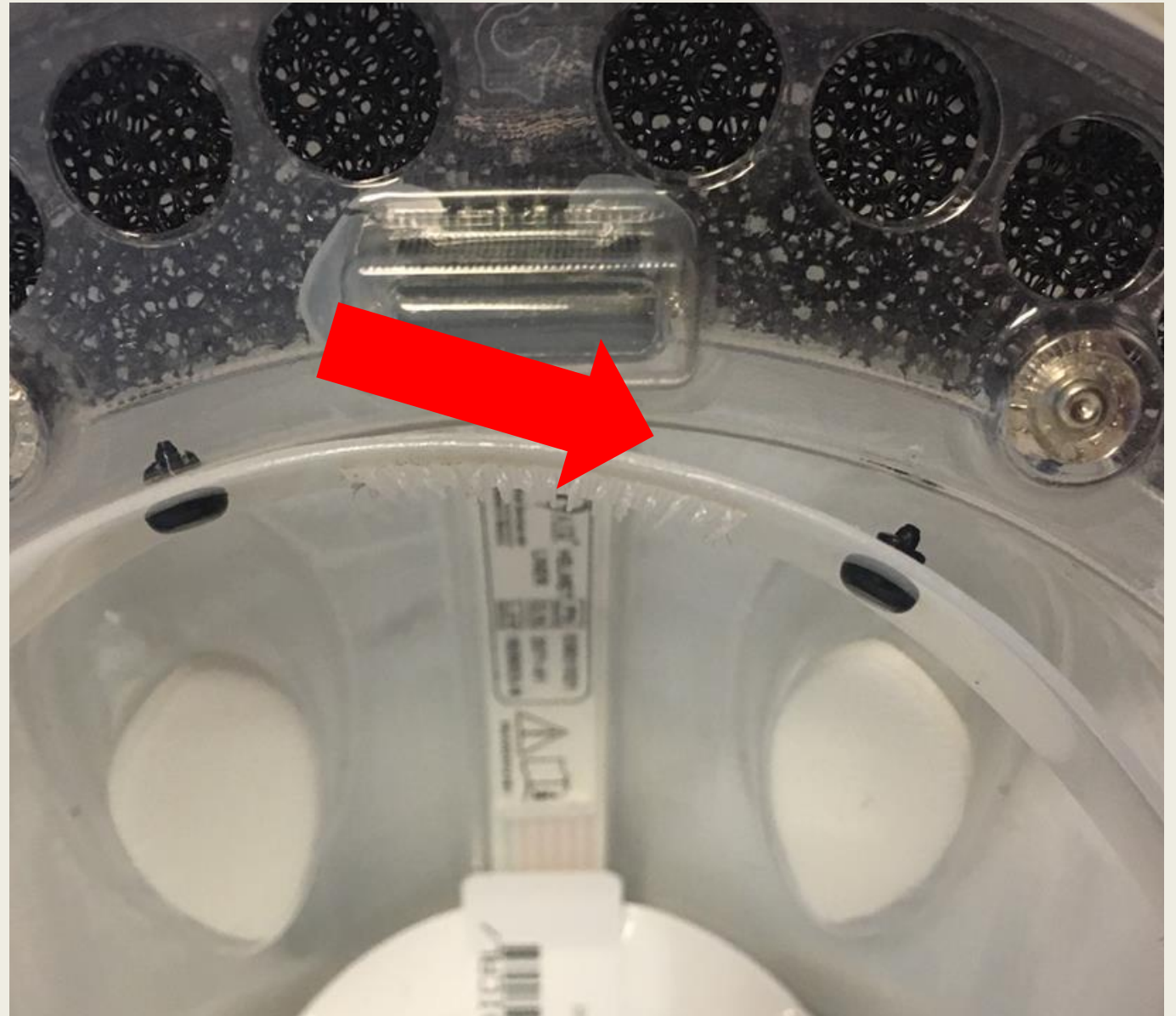
If soiled,
Remove comfort
strip from
headband gently
while supporting
headband frame.
Do not pull or tug at
plastic frame while
cleaning.



How to avoid:

Do not try to pry away plastic headband from shell to clean.

Do not try to insert wipes into narrow spaces of helmet to clean. Gently wipe overall surface.



How Properly Store and Transport PAPR

- Do not hang PAPR on the wall
- Each PAPR should be placed in a separate plastic bag
 - *1 PAPR for 1 BAG*
- Do not put stack PAPRs on top of each other in bins. The integrity of the shell can be damaged from the constant hitting of the PAPRS against each other
 - *PAPRs should be placed gently in a line NOT touching one another*



Reminders:

Do not hold PAPR by cord or by the back headband, always carry the entire helmet shell.

The only disposable strip you should remove if it is soiled or dirty is the front comfort strip. Posterior soft foam pad should not be removed.

*NOTE: The rear headband cushion and the four head cushions on the top underside of the Helmet Liner are closed-cell foam and may be cleaned by wiping with an standard gray top PDI wipes.

Remind colleagues of proper procedures if you see PAPRs being mishandled

Due to COVID-19 demand, PAPER supplies are highly limited

Let's use our resources wisely to get through this together!



Resources: MAX-AIR PAPR VIDEO



Link to Video: <https://www.youtube.com/watch?v=5SC2PH5vqac>